



Tradesol Engineering Solution

A Name You Can Trust

Professional I.T. Solution & Support
Web Solution
Maintenance & Service

OUR BRANDS



OUR I.T. SOLUTION

We realize that an all-cloud solution is not the best option for all businesses. Whether your network is located in your office, in your private data center, or in a third-party colocation facility, TES IT Solutions can help you choose the right hardware and software to meet your unique needs, and we'll work with you to ensure that your environment is optimized and secure.

Private endpoint Features



Servers

Data and applications are only as useful as the servers they reside on. All ITS managed services plans include 24/7 server monitoring, maintenance and ongoing proactive and reactive support. Whether servers are hosted locally in your office, maintained in a private data center or residing in the public cloud, the TES team deploys tools for full remote management for optimized performance, and if onsite remediation is ever needed, we have the resources to get the job done and avoid costly disruptions and downtime.



Back-Ups

Did you know that 40 percent of companies that do not have proper backup or disaster recovery plans in place do not recover from a disaster? Your company's survival depends on the survival of your company data. That's why every ITS support plan includes full backup solutions and ongoing support. Whether your information resides on servers in your office, servers in a data center, Microsoft 365, or a combination of any of these, ITS maintains and monitors your backups to ensure your company is a survivor, not a statistic.



Routers

Only a few years ago, routers were relatively dumb devices that merely beamed the Web into your home or office and not much more. Now, they offer everything from support for multiple wireless frequencies to mobile-management tools. The increased capabilities of these important devices requires experience and knowledge to keep them running properly and quick resolution of issues when they arise. Router support is fully covered under all TES managed services plan



Firewalls

Next-generation firewalls reduce cost and complexity with full visibility into applications, users and networks and provides best of breed security. While they have a comprehensive range of capabilities, it's critical that firewalls are kept up-to-date and monitored and maintained by experienced technicians to avoid network security breaches. IT Solutions' Proactive Services include firewall upkeep and troubleshooting that protect the data and applications which are critical to our clients' success.

Private Cloud Features Include

- Anti-virus scanning and updates
- Anti-spam protection with message continuity service
- Cloud-based malware protection
- Bi-weekly defragmenting and hard disk scanning
- Automated alert monitoring and notification
- Enhanced security package
- Strategic Advisor service
- Live access to 10:00 am – 6:00 pm helpdesk with after-hours on-call support for server to clients
- Access to IT Solutions client management



OUR I.T. SUPPORT SERVICE PLAN

Our plans focus on your company's unique needs and are designed to control costs. From basic infrastructure monitoring and management to fully managed network services with end-user support, we've got you covered. We offer several managed IT service packages, our comprehensive coverage plan, our infrastructure management and desktop monitoring plan; Targeted Response, our Help Desk support plan — **or we can customize a support package that suits you.**

ADVANCED & GUARDIAN

Featuring comprehensive IT management with flexible end-user support options.

ADVANCED Plan

Includes all features listed below. You pay for end-user support as needed.

GUARDIAN Plan

Includes all features in the Advanced plan, plus 24/7 remote and onsite support for your users. End-user support is included.

Migrations, Upgrades, and Hardware

All projects, including migrations and upgrades, are billed hourly against a non-expiring block of time.



- Help Desk: 10 AM – 6 PM BST
- remote and on-site support for:
 - All routers, firewalls, switches, and ISP issues
 - All servers and Microsoft 365 (Exchange Online, SharePoint/OneDrive)
 - End-user issues (inclusion is plan-dependent)
- Anti-virus scanning and updates
- Anti-spam protection with message continuity service
- Cloud-based malware protection
- Automated alert monitoring and notification
- Access to IT Solutions client web portal for ticket creation and management

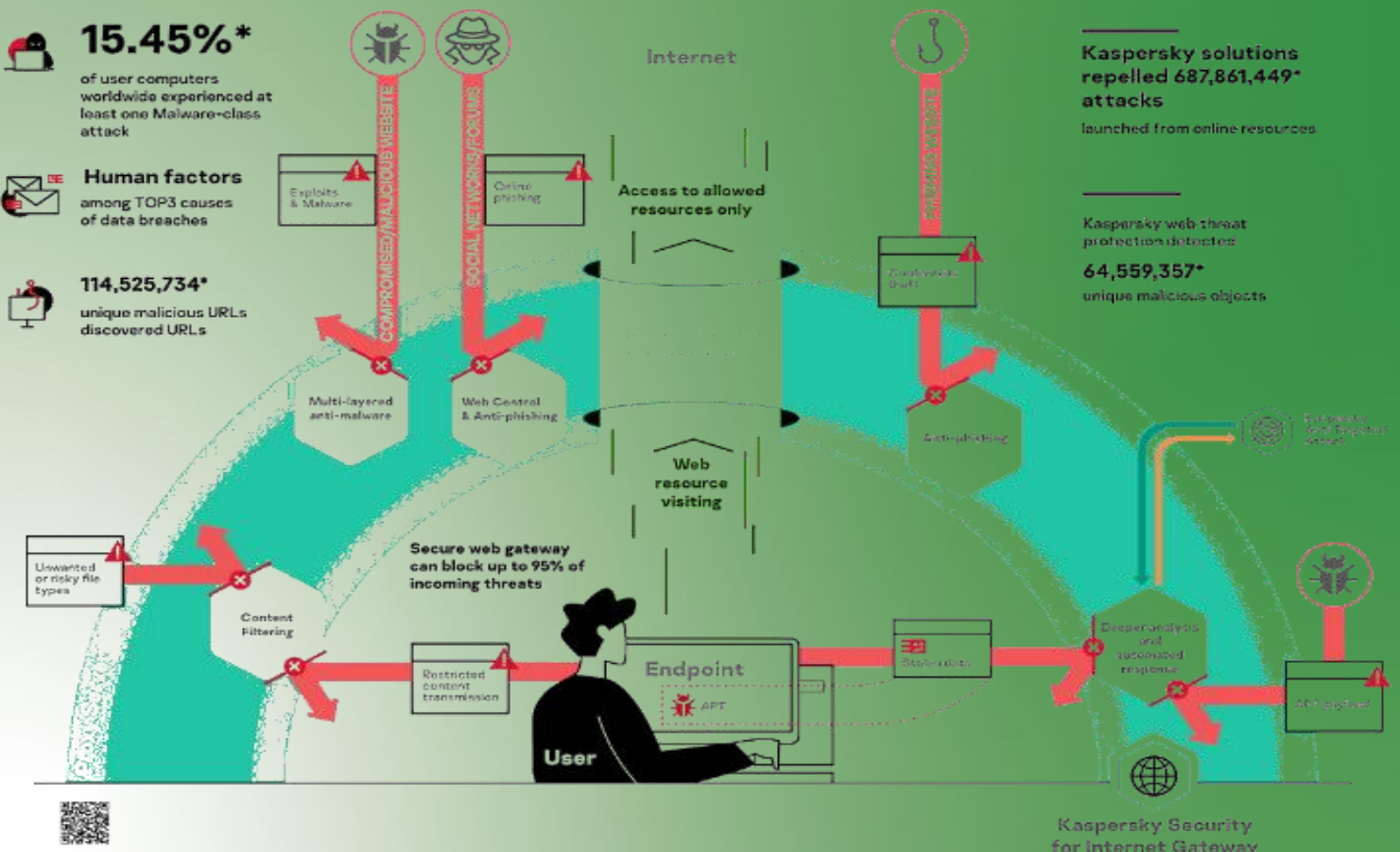
- TES Protection Package, which includes the following:
 - High-security password policy, firewall lockdown, remote access security
 - Active Directory audits and controls, Microsoft patching
- Strategic Advisor service including ongoing strategic planning
- Data Vault onsite backup solution with removable drives for offsite storage and rapid recovery. Full off-site cloud backup also available.

Targeted Response Plan (Help Desk Support)

Your organization may not require a full suite of managed support. That's why we are excited to offer our "Targeted Response Plan," a specialized Help Desk support package tailored to address your needs with precision and efficiency. This plan grants your company access to our "Targeted Response Team," available from 10:00 AM to 6:00 PM BST, providing you with expert IT assistance and troubleshooting for your team.

Kaspersky Web / Endpoint Security Management

As a Tier-1 Kaspersky web security Solutions Provider and Modern Work Cloud Solutions Partner, IT Solutions has the experience and extensive product knowledge our clients need for comprehensive management of their office environments. Whether you're new to the platform or are already using it and looking to extend its capabilities or outsource day-to-day support, Kaspersky Security Solutions knows how to help make the most of your Online activities, email security and official environments. For clients who rely on the Microsoft cloud for their file storage, email, and collaboration, we offer Advanced and Guardian plans specifically tailored to support each client's 365 tenant.



Managing the Details

We take care of matching you with the right subscription and managing it day-to-day so you can focus on leveraging it to improve productivity and collaboration with colleagues and customers.

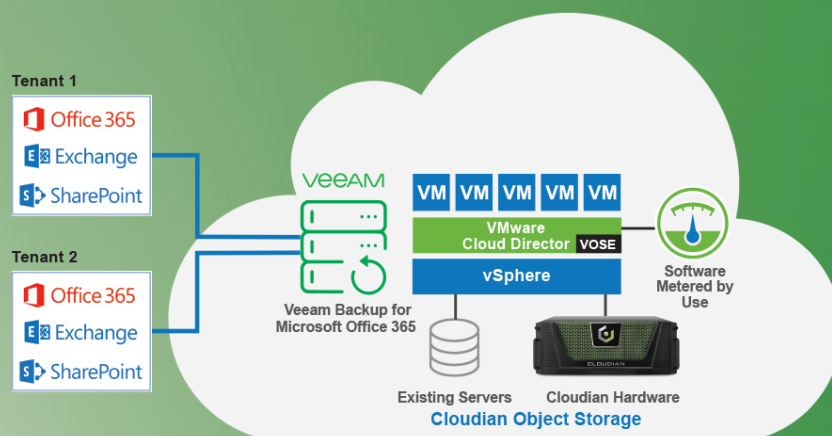
Maintaining Security

Keeping things secure is our top priority. With our Enhanced Security Package, anti-virus and malware protection make sure your network, files, and communications are protected while still being available to you and your employees.

Keeping things secure is our top priority. With our Enhanced Security Package, anti-virus and malware protection make sure your network, files, and communications are protected while still being available to you and your employees

Microsoft O365 Security Providing Insight

It can be daunting to understand all the nuances of Microsoft 365 and how they can benefit your team. We keep you updated on improvements and new features that are relevant to you, and our 5-Year Technology Roadmap allows you to plan for the future.



- 24/7 remote and on-site support for all servers and Microsoft 365 (Exchange Online, SharePoint/OneDrive)
- Backup of Microsoft 365 environment to third-party service
- Real-time monitoring setup on all critical devices
- Implement network standardization based on best practices
- Additional Protection Package feature: O365 Identity and Tenant Management* (Multi-Factor Authentication (MFA), Data Loss Prevention (DLP), Auditing, Secure Score).
- Strategic Advisor service, which includes ongoing strategic planning support and network recommendation reports, including 5-year roadmaps
- Full documentation and inventory of your infrastructure
- “Lunch and learn” orientation session for your staff
- O365 Governance* (Microsoft Teams, SharePoint, OneDrive, E-mail, Advanced Threat Protection)

OUR WEB SOLUTION

Websites and Mailboxes

Website and custom domain email are the two basic needs for any business. TES offers the best of both with Sites and Mail. Build your website to suit your style and manage your professional emails for business communications.



Domain registration and Hosting



You can now register a custom domain name that serves as a unique online identity for your business. Domains come with free and reliable hosting packed with unlimited bandwidth.

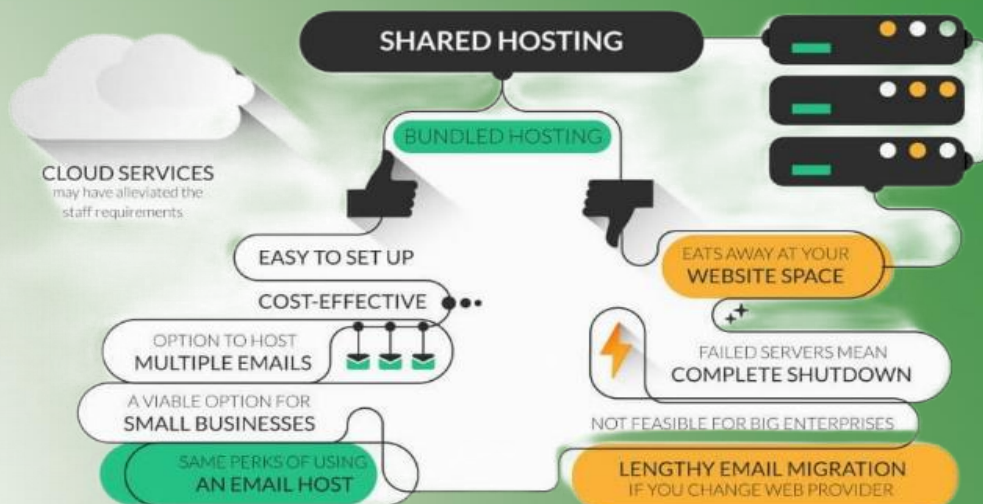


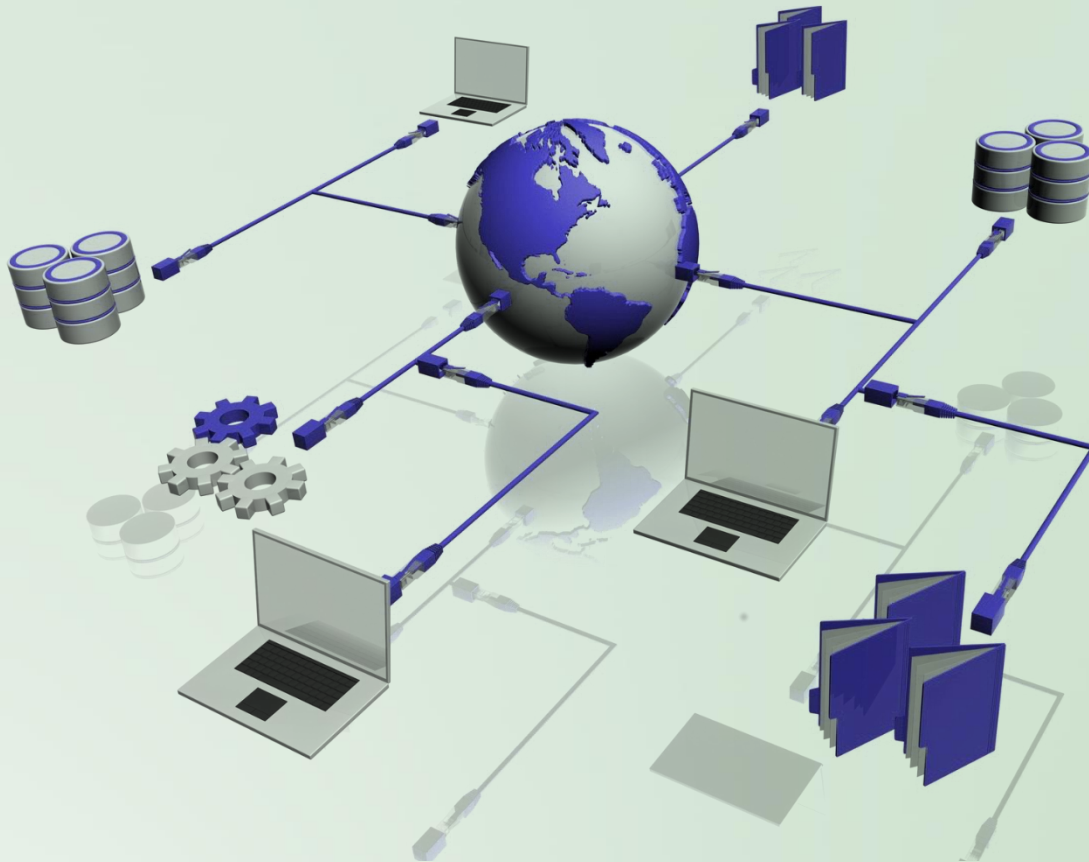
No matter how high it gets, we'll handle the traffic!

Secure business email

Along with the website for your domain give more credibility and professionalism to all your emails with a custom domain email address from a service that's ad-free, robust, and feature-rich.

Here's a full breakdown of the advantages and disadvantages to using the same website and email hosting to help you decide:





 UNIFILL GROUP ANAN KNITTINGS LTD. ANAN GRAPHICS & DESIGNS LTD.	 Asrotek GROUP	 METRO GROUP MADE TO TRADE.	 mitali group
 BH BENGAL HURRICANE GROUP	 MOONLUX OSHAWA	 CUTE DRESS INDUSTRY LIMITED	 PAKIZA Pakiza Group
 FAKIR fashion	 SUPREME	 Interstoff	 MASCO

✉ it@tradesol.com.bd || tradesolbd@gmail.com

☎ +88 01712-951990 || +88 01774-86973

🌐 www.tradesol.com.bd/i-t-division

📍 **Bangladesh Office:**
186, Taltola, West Kafrul Sher-E Bangla, Nagar,
Dhaka -1207

📍 **China Office:**
No. 1418, Zhaungliang Rd., Fengxian Dist,
Shanghai 201415, China

☎ **China Office:** +86 13918247874